



PUKKA

— NEW CAPITAL —

العاصمة الإدارية الجديدة



ABOUT THE **DEVELOPER**

Master Builder Group (MBG) are the largest and best real estate developers at Delta area. MBG's projects vary between medical, residential, educational, architectural design, construction and communities.

MBG maintains a full time staff of well trained real estate professionals who continually strive to provide top quality for our clients. Our current projects are: Sunset Resort the first Resort in Ras El-Bar, El Ola City the first Compound in Mansoura, Mansoura International Medical Center (MIMC), El Safa Mall, Nile Academy and much more.





The New Capital

The New Capital is wide range project worked on by the government which aims to become the largest economic hub in the MENA region. Through a proper infrastructure, the new capital is going to include the new presidential residence, some main ministries and councils taking advantage of its strategic location between Cairo and Suez nearby the Cairo Suez road. Be a part of the Government's new project, The New Capital where you will be surrounded with all the facilities you need. You will enjoy a proper infrastructure and a quiet environment where you be able to start a new life.

CONNECTIVITY

4 MIN

From The Green River

3 MIN

From The Expo City

5 MIN

From ALMASA Hotel

2 MIN

From Cathedral of New Capital

5 MIN

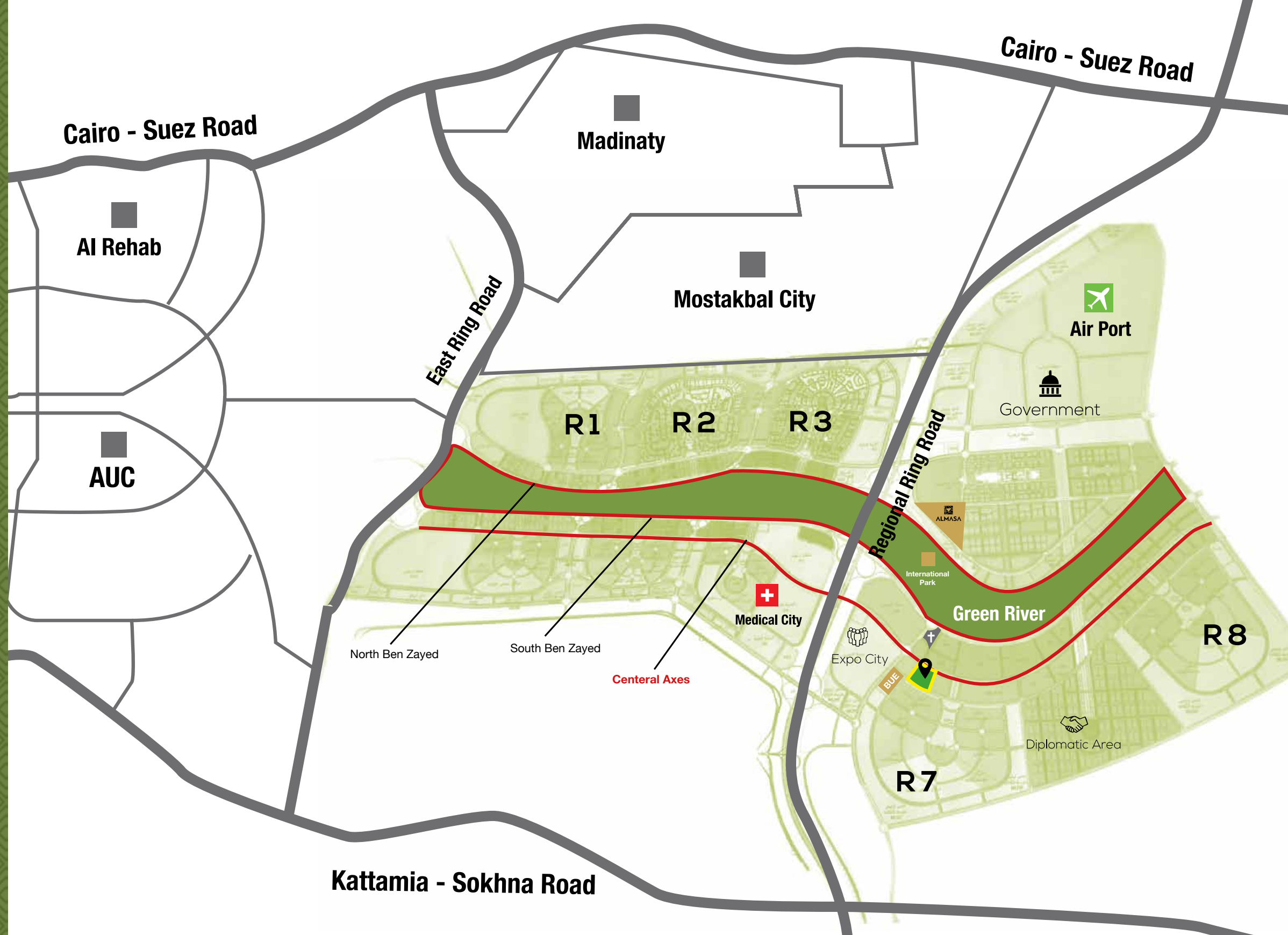
From Medical City

10 MIN

From The Government Area

12 MIN

From The Airport of New Capital





الموقع يفرق LOCATION MAP

Our strategic and prime location at the new capital, heart of new capital, surrounded by many strategic icons in the new capital, so you will always be connected.





About The Project

PUKKA is our project in the new capital. The project is built on 41 acres. It consists of 42 buildings and 5 different types of units. Our ultra-modern architectural design will not only influence the way people live in our community, but the way Egyptians live too. What makes Pukka unique is the prime location, green areas, event lounge, swimming pools, clubhouse, solar system panels, pet care service, premium mall, health club, spa and a food court.

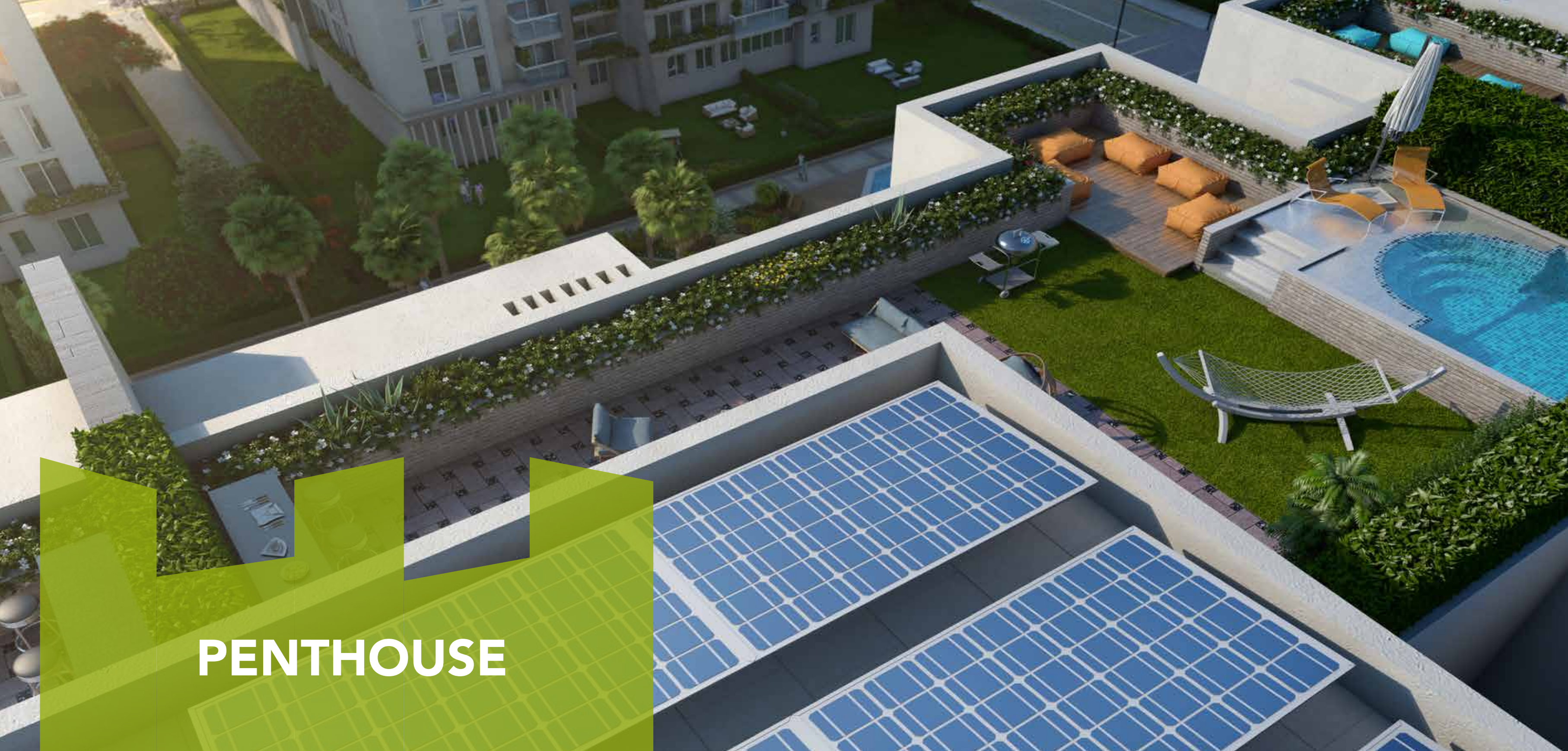


GREENERY

As your health is our number one concern, we made sure you are surrounded by greenery as we all deserve some peace and quiet after a long day at work and a chance to communicate with nature away from the hectic life of the city.



PRIVATE GARDEN



PENTHOUSE

PENTHOUSE





CAPITAL WALK

COMMERCIAL AREA

You just need to chill & relax, no need to go anywhere for food or shopping, we're bringing it all in the palm of your hand, with our commercial area pepped up with a distinctive collection of restaurants and cafes, you won't need to go anywhere far.



MIMARLIK

PUKKA CAPITAL WALK

AIVA

PUKKA
NEW CAPITAL

PUKKA
NEW CAPITAL

AW CORPORATE

PHARMACY

BUSINESS CENTER



MEDICAL CENTER & CLINICS

Your Health care is the most important thing for us so we created Medical Zone so you can find all what you need in one place thinking of polyclinics.



Pool
VIEW

TYPE M



THE
Boulevard

TYPE G



Elite

TYPE C



The inherent nature of having all disciplines under one roof fosters a collaborative design team approach which translates into providing superior designs, well coordinated documents and excellent communication between rmc and its client's.